

**Interstate 345 (I-345)  
Feasibility Study**

**From I-30 to Woodall  
Rodgers Freeway**

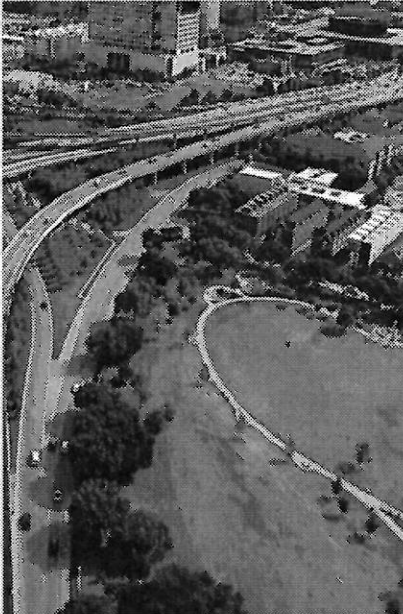
**Public Meeting  
CSJ: 0092-14-094**

**Table of contents**

<b>1</b> Introduction	<b>6</b> Study and Project Goals and Objectives
<b>2</b> Project Overview	<b>7</b> Public/Agency Outreach and Involvement
<b>3</b> Dallas CityMAP	<b>8</b> Next Steps
<b>4</b> Project Development Process	<b>9</b> Contact Information
<b>5</b> Feasibility Study	<b>10</b> Thank You

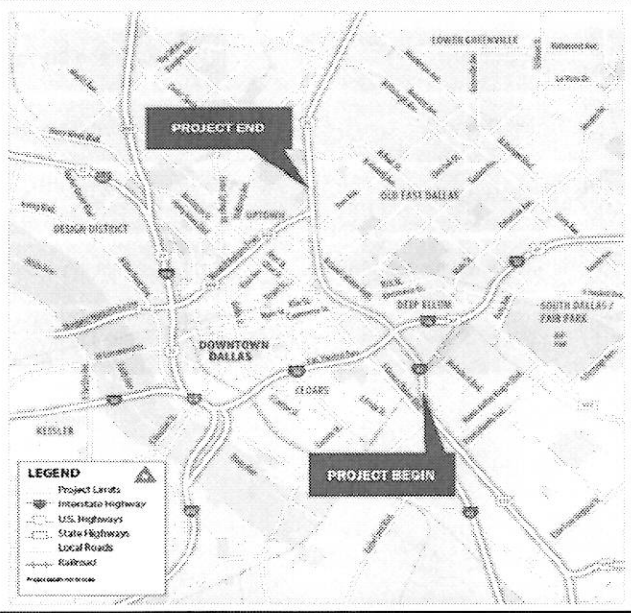
### Project Overview

- TxDOT regularly reviews its existing infrastructure
- I-345 will reach its current life span in the next 25 years
- The Department is embarking on a feasibility study to plan for the future of the roadway
- This study will incorporate feedback from stakeholders, traffic data and current and future development plans to develop and assess conceptual alternatives



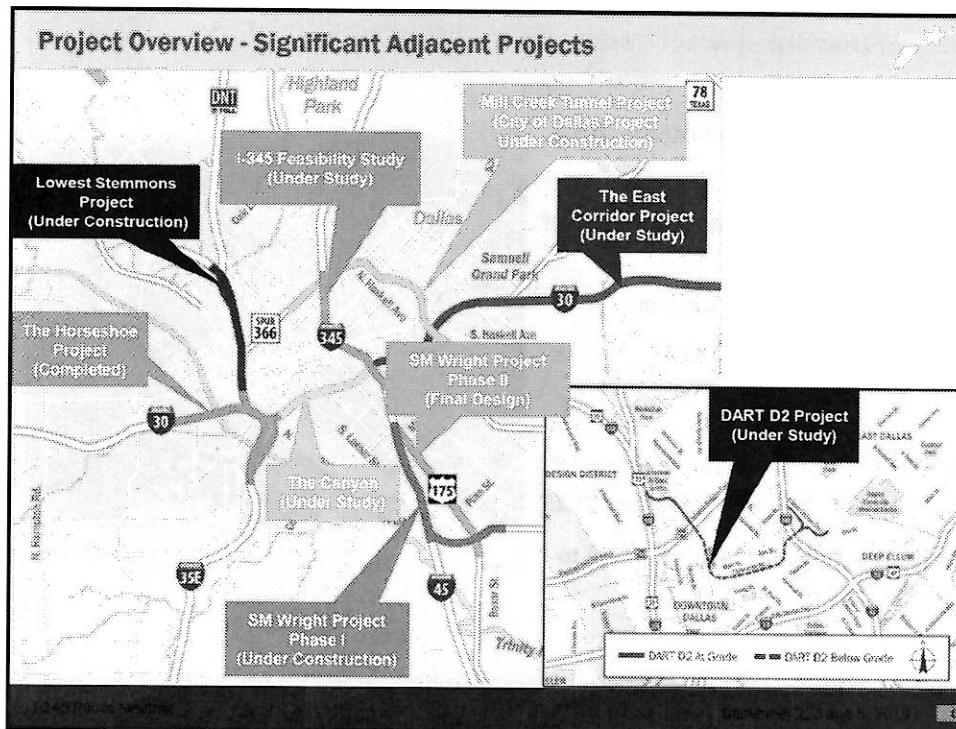
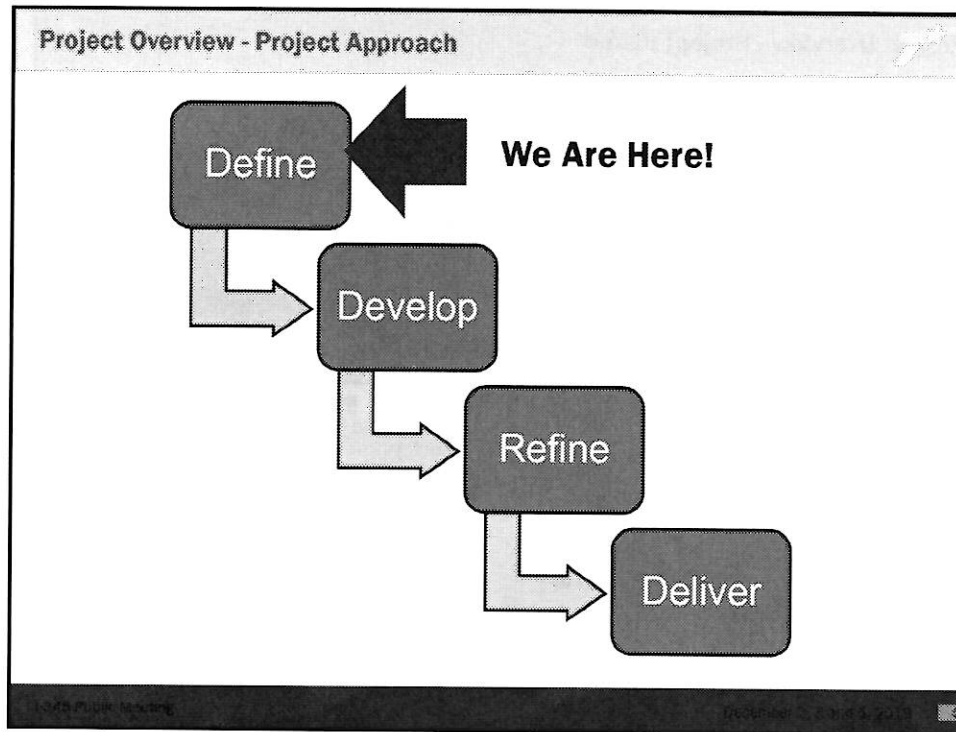
### Project Overview - Feasibility Study Location Map

**From I-30 to Woodall Rodgers Freeway (Spur 366)**



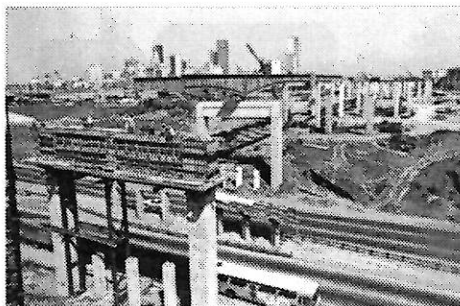
**LEGEND**

- Project Limits
- Interstate Highway
- U.S. Highway
- State Highway
- Local Roads
- Railroads



### Project Overview - Project History

- Need identified in 1952
- Efforts to obtain interstate designation begin in 1956
- Highway designation received in 1965
- Construction begins in 1968
- Fully opens to traffic in 1973
- Approximately 1.4 miles long
- Designed to maintain continuity of city street grid
- Creative and innovative approach to design, at the time



*Interstate 345 under construction in 1969  
Source: The Dallas Library*

### Project Overview - Project History

- Feasibility study conducted in 2012 intended to:
  - improve the structural condition of the bridge
  - reduce maintenance cost
  - reduce the frequency of maintenance and preservation activities
- Stakeholder and public meetings held November and December 2012
- Repairs to bridge began in 2014 to extend service life

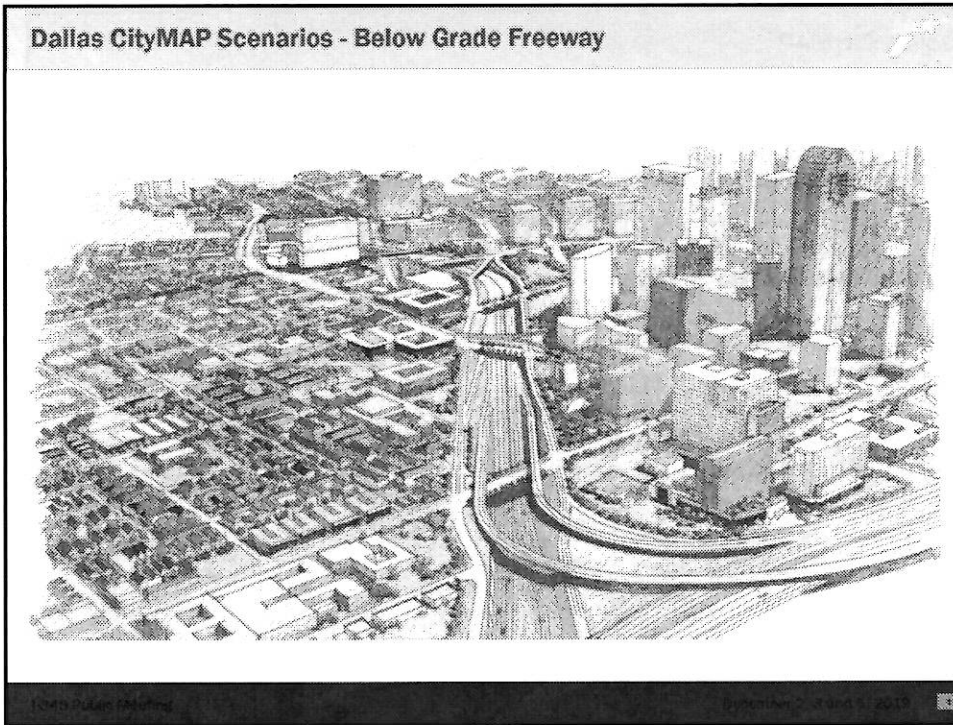


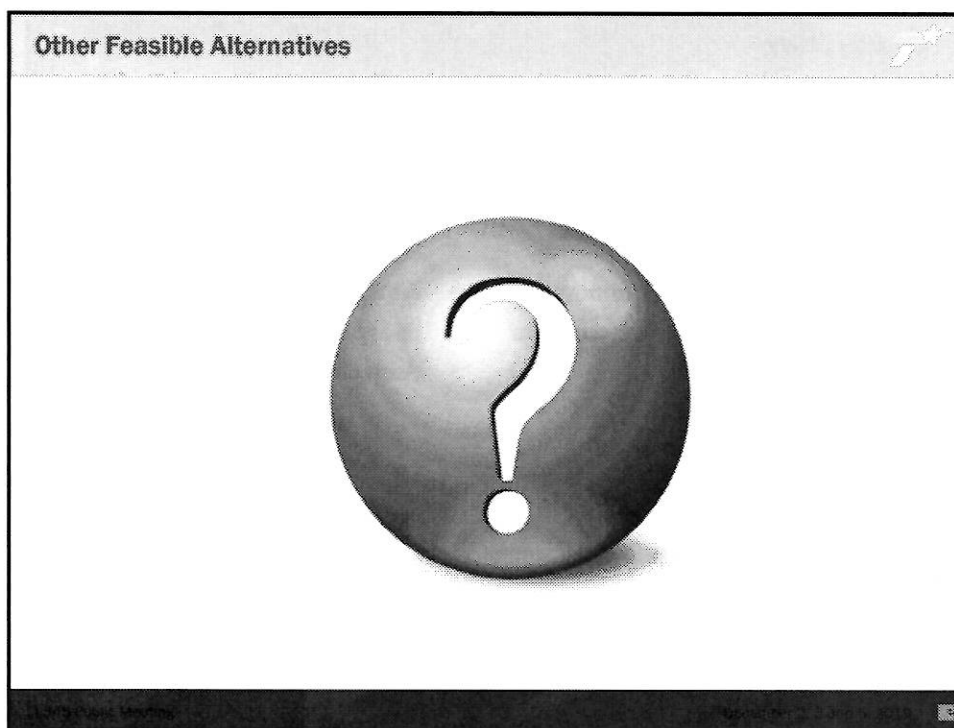
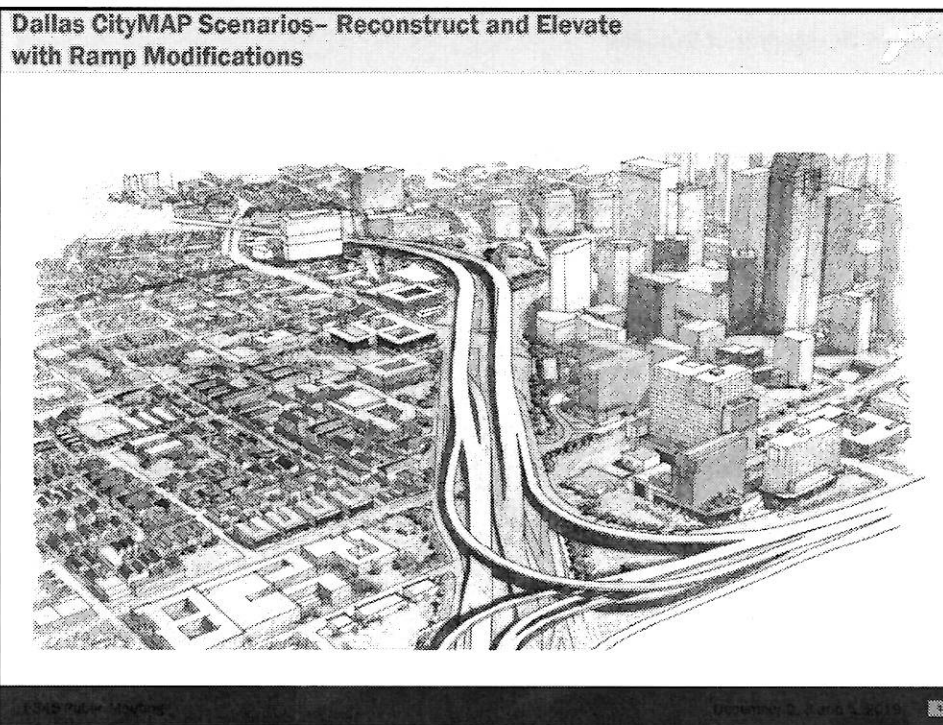
*Source: AIA*

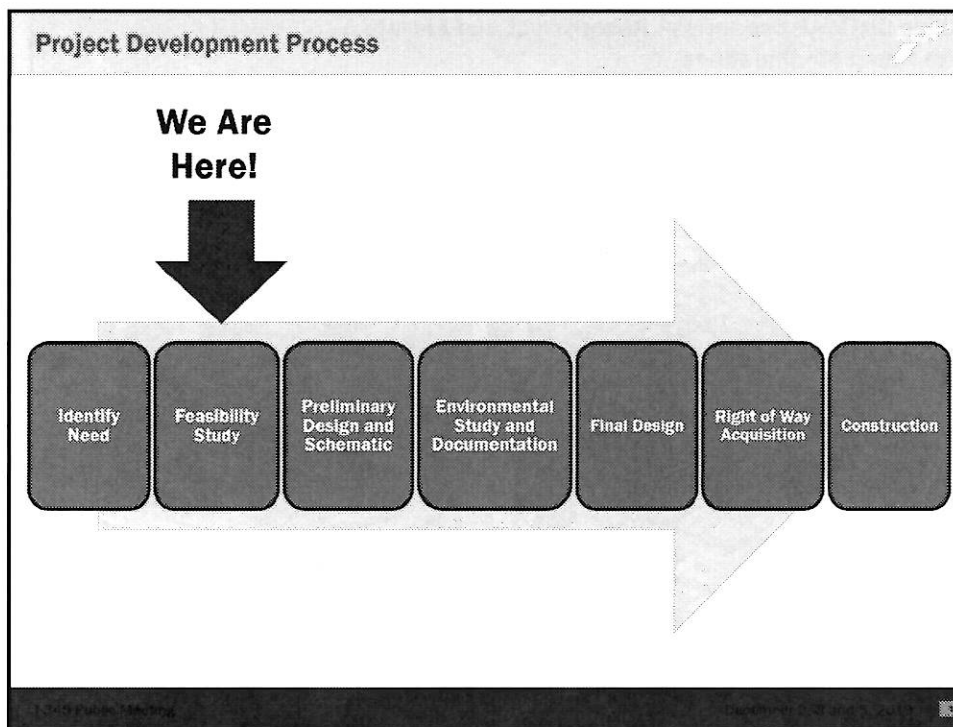
### Dallas CityMAP

- Study that assessed the interstate system surrounding Downtown Dallas
- Developed scenarios for several interstates
- Art of the possible
- Developed four scenarios for I-345
- New, feasible alternatives developed through the current study will also be considered

### Dallas CityMAP Scenarios - No Build







- ### Feasibility Study
- Stakeholder and public input
  - Engineering analysis
  - Traffic analysis
  - Right of Way (ROW) requirements
  - Existing and planned developments
  - Cost and economic impact
  - Other planning efforts
  - Natural and cultural resources
  - Land use and parkland
  - Water resources and flood plains
  - Hazardous materials
  - Social and community impacts



### Study and Project Goals and Objectives


- Have an inclusive, transparent and collaborative public involvement process
- Work collaboratively with stakeholders
- Review recommendations from previous studies
- Provide the best solution that maintains safety, mobility and operability
- Incorporate TxDOT and community goals
- Work toward technically preferred alternatives

### Public/Agency Outreach & Involvement

Surveys	Meetings with Key Stakeholders and the Public	Other Outreach
<ul style="list-style-type: none"><li>Surveys to coincide with public meeting series</li><li>Preferences</li><li>Priorities</li><li>Use of I-345</li><li>Feedback on proposed alternative concepts</li></ul>	<ul style="list-style-type: none"><li>Elected Officials</li><li>Advocacy Groups</li><li>Public Meetings</li></ul>	<ul style="list-style-type: none"><li>Website: <a href="http://www.345study.com">www.345study.com</a></li><li>Email: <a href="mailto:345study@txdot.gov">345study@txdot.gov</a></li><li>Newsletters</li><li>Mailing List</li><li>Presentations</li><li>Press Releases</li><li>Social Media</li><li>Fact Sheet</li><li>Infographics</li></ul>

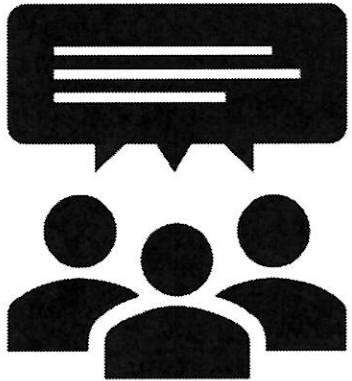
**Next Steps**

- Leave your feedback!
- Next series of public meetings
  - Present preliminary traffic analysis
  - Present conceptual alternatives based on stakeholder feedback, traffic data and existing land use and economic development studies/plans



1-2-19 Public Meeting

**Next Steps**



**We Want to Hear From You!**





**Comments must be postmarked or received by Friday, Dec. 20, 2019**

**Take the survey by Friday, Dec. 20, 2019**

1-2-19 Public Meeting

**Contact Information**

**TxDOT Project Manager & Project Website:**

-  TxDOT Dallas District  
ATTN: Travis Campbell, P.E.  
4777 E. US Highway 80  
Mesquite, Texas 75150
-  [345study@txdot.gov](mailto:345study@txdot.gov)
-  [www.345study.com](http://www.345study.com)
-  (214) 320-6100

**Thank You!**