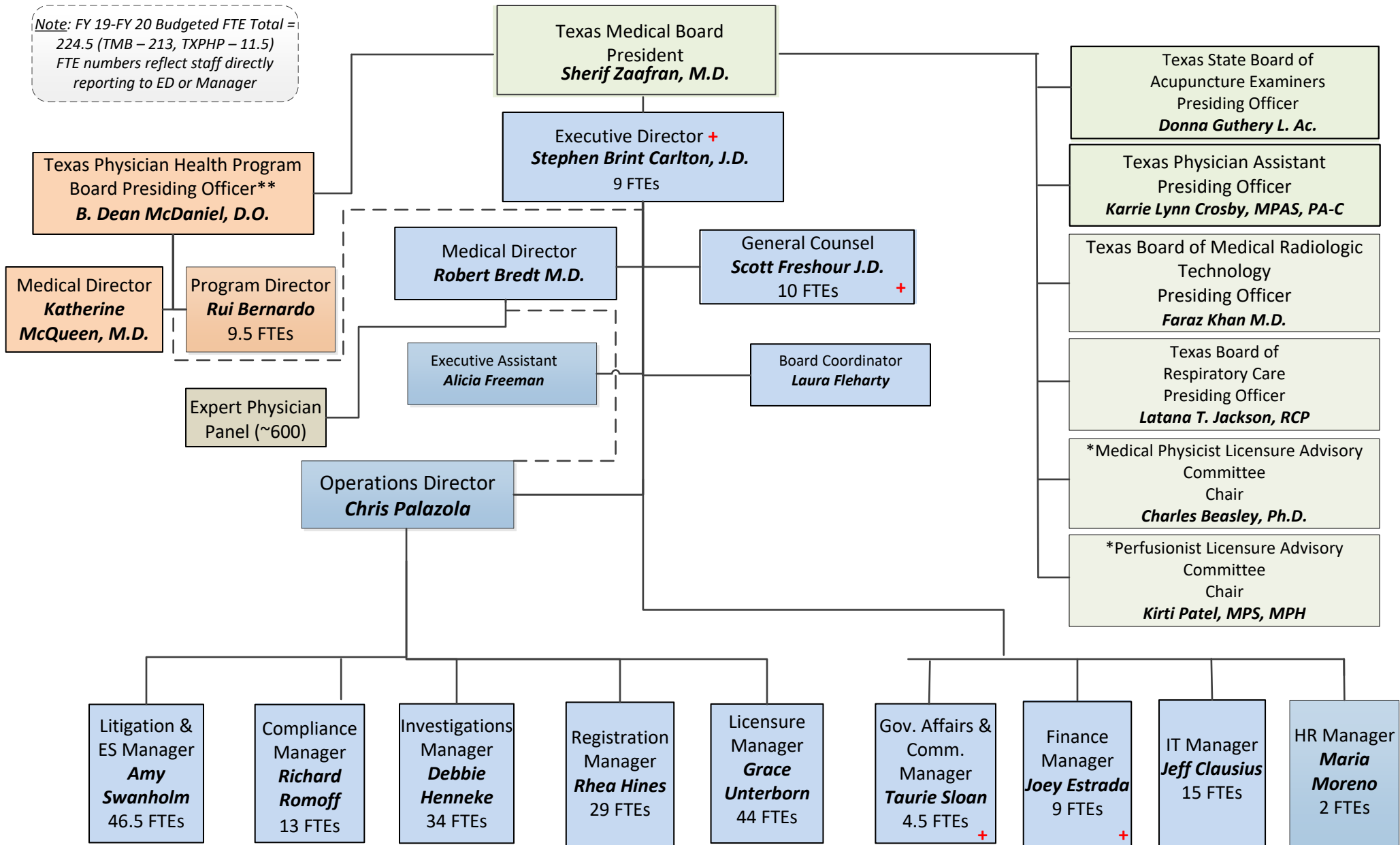


Texas Medical Board Organizational Chart

Note: FY 19-FY 20 Budgeted FTE Total = 224.5 (TMB – 213, TXPHP – 11.5)
FTE numbers reflect staff directly reporting to ED or Manager



+ Risk Management Plan included in multiple departments as noted.

* The TMB advisory committees are appointed by the TMB president

--- The TMB Medical Director has oversight on standard of care issues within designated departments.

** The Texas Physician Health Program (TXPHP), which is administratively attached to the TMB, has a governing board appointed by the TMB president.

<---> The TXPHP Medical and Program Directors provide program performance reporting to TMB Executive Director.